



THE
DAMN PROUD
— CAMPAIGN —
Kappa Chapter

WWW.PHISIGPSU.COM | INFO@PHISIGPSU.COM

PHI SIGMA KAPPA - PENN STATE, ALUMNI RELATIONS PROCESSING CENTER, P.O. BOX 7007, ALBERT LEA, MN 56007-8007





TABLE OF CONTENTS

Case for Support.....	4
Volunteers.....	5
Capital Improvements for the House.....	6
Strengthening Our Connection Through Technological Infrastructure	7
Reaching Our Goal	8
Ways to Give.....	9



Case for Support

As Alumni of the Kappa Chapter of Phi Sigma Kappa, we are the owners of and the stewards of not only our house, but of our legacy and our future. Our physical home at 501 S Allen St. is a key component of that legacy and future. However, our connections with each other, including the brothers who came before us and the brothers of our future, are also key components. This campaign is about strengthening our shared legacy and future— about building upon a great foundation, to enable a bright and successful future.

Our last capital campaign, “The Reason to Be Proud Campaign,” which kicked off in 2006 and raised \$1.2 million, established our current position. There was a great need then for investment in the physical house. We are now in a position to take the house and our brotherhood to a higher level— to a level that anticipates and prepares for the future needs of both Actives and Alumni. After 100 years, we continue to stand proud. Now is the time to set the stage for 100 more.

With this campaign, we are looking to:

- **Improve the Kappa environment, in which young men can learn about and become committed to the timeless Cardinal Principles of Phi Sigma Kappa: Brotherhood, Scholarship, and Character – an environment in which Brothers can build leadership skills, develop lifelong friendships, and become great members of their communities.**
- **Improve the House for the Brotherhood, with investments in basics of the house and in technology. With these investments, our goal is to ensure we are providing an environment that is competitive with other options at PSU and in the fraternal system— one that offers a modern and comfortable home away from home for Actives— and one that provides easy ways for Alumni to participate in Kappa functions, wherever the activities may take place and/or wherever the Alumni may be located.**

Brothers, you can take pride in our current condition. The Phi Sigma Kappa Association of State College and Kappa Chapter are currently in solid financial health. A new generation of Active Brothers is stewarding our legacy on campus. Our house— close to 100 years old— is a strong foundation. Our generous Brotherhood has made this possible.

Now is the time to invest in these assets to do more than just sustain our legacy. As stewards of the vision for Phi Sigma Kappa, it is up to us to enrich our legacy for future generations.

The Phi Sigma Kappa Association of State College and our newly formed Capital Campaign Committee have created a plan to raise \$750,000 in Alumni commitments for these projects. A clear vision combined with a strong Board that will oversee the planned investments will yield a great investment in our shared legacy and future.

The next step for shaping our future is to launch a capital campaign to get started on the planned renovations and upgrades. Our highest priorities include:

- **CAPITAL IMPROVEMENTS TO THE HOUSE.** Plans are in place to upgrade the kitchen, update flooring throughout the house, refresh the basement, and more.
- **STRENGTHENING OUR CONNECTION THROUGH TECHNOLOGICAL INFRASTRUCTURE.** This includes building a robust virtual participation system for Alumni events, creating a live Kappa Chapter-interest feed, digitizing our chapter records, and more.

You can read more about the specifics in the brochure and corresponding Frequently Asked Questions at phisigpsu.com/campaign/faqs.

By giving to the “Damn Proud” Capital Campaign, you are investing in a Phi Sig that is built for the future— a critical goal to achieve as we seek to honor our past. Consider the meaning of the Phi Sig Brotherhood in your life, then and now. You can make an impact that is worthy of your value of your experience..

Volunteers

THE “DAMN PROUD” CAPITAL CAMPAIGN COMMITTEE

Co-Chairmen

Dan Lourie '14

Martin Barbato '79

Committee Members

Steve Handwerk '74

Fred DeCock '80

James Durfee '80

David Hyland '80

Ben Jarmul '81

Mark Robinson '85

We are still seeking alumni leaders to join our Capital Campaign Committee! Responsibilities include attending regular Zoom meetings, ideating and providing feedback on alumni communications, sharing input on house projects, and conducting personal alumni outreach. If you are interested in becoming a Committee Member or if you'd like to nominate a Brother who would be a good fit, email **Dan Lourie** at lourie.daniel@gmail.com for more information.



THE PHI SIGMA KAPPA ASSOCIATION OF STATE COLLEGE

President

Martin Barbato '79

Vice President

David Hyland '80

Treasurer

Ben Jarmul '81

Secretary

Joe Mazziotti '14

Board Members

Bill Albertson '73

Steve Handwerk '74

Matt Rose '86

T. Jeff McGraw '88

Nick Sandford '16

Chapter Advisors

Fred DeCock '80

James Durfee '80

Mark Robinson '85

Dan Lourie '14

CAPITAL IMPROVEMENTS FOR THE HOUSE

Undergraduates at Penn State have their choice of nearly 50 fraternities, many of which have renovated or updated their houses in recent years. To keep Phi Sigma Kappa competitive we must keep our physical structure competitive.

We must consider that today's Greek students expect more in their student housing accommodations than many of us did as Actives. They want more from their home than just a place to rest their head and share in Friday night mixers. They expect more privacy and security. They desire living quarters that offer the proper study environment and attractive social spaces.

For those men who currently live at the house, and for those future generations who would like to make our house their home, we— as alumni— must consider what we can do to further improve the livability and serviceability of our housing options. This is especially true at a time when our competition— both Greek and non-Greek— have been actively improving their facilities.

Our planned house improvements include:

- **UPGRADE KITCHEN:** we will make improvements to support the current needs of our culinary staff. Also, we will add a small pantry near the dining room with a fridge, dry goods storage, and basic appliances specifically for use by our Active Brothers outside of mealtime. This will keep our professional kitchen a separate, designated space.
- **UPDATE FLOORING:** we will replace and repair worn-out flooring throughout the house.
- **REFRESH BASEMENT:** we will revamp our downstairs social space including refinishing the Triple Ts on the floor, expanding our HVAC system to the basement, and other small enhancements to make the lower level a more attractive and functional space for events.
- **CREATE OUTDOOR SOCIAL SPACE:** we will expand the basement room into the adjacent outdoor space (currently designated for parking) with appropriate flooring, tables, and lighting. This will serve several purposes:
 - To address the current issue of undergraduates making use of the main floor rooms during social events instead of keeping gatherings contained in the basement. This is mainly due to a lack of space on the lower level and the absence of airflow which results in stuffiness.
 - To help us preserve our main floor and avoid noise complaints from our neighbors. The addition of an outdoor social space where Active Brothers and their guests can easily expand outside on the basement level instead of having social events overflow to street-level rooms will help alleviate this.
 - Additionally, to compensate for the lost parking lot, we plan to repurpose part of the grassy area beside the house to create more parking spots.
 - Alumni will also enjoy the use of the new outdoor space during reunions and visits to State College.

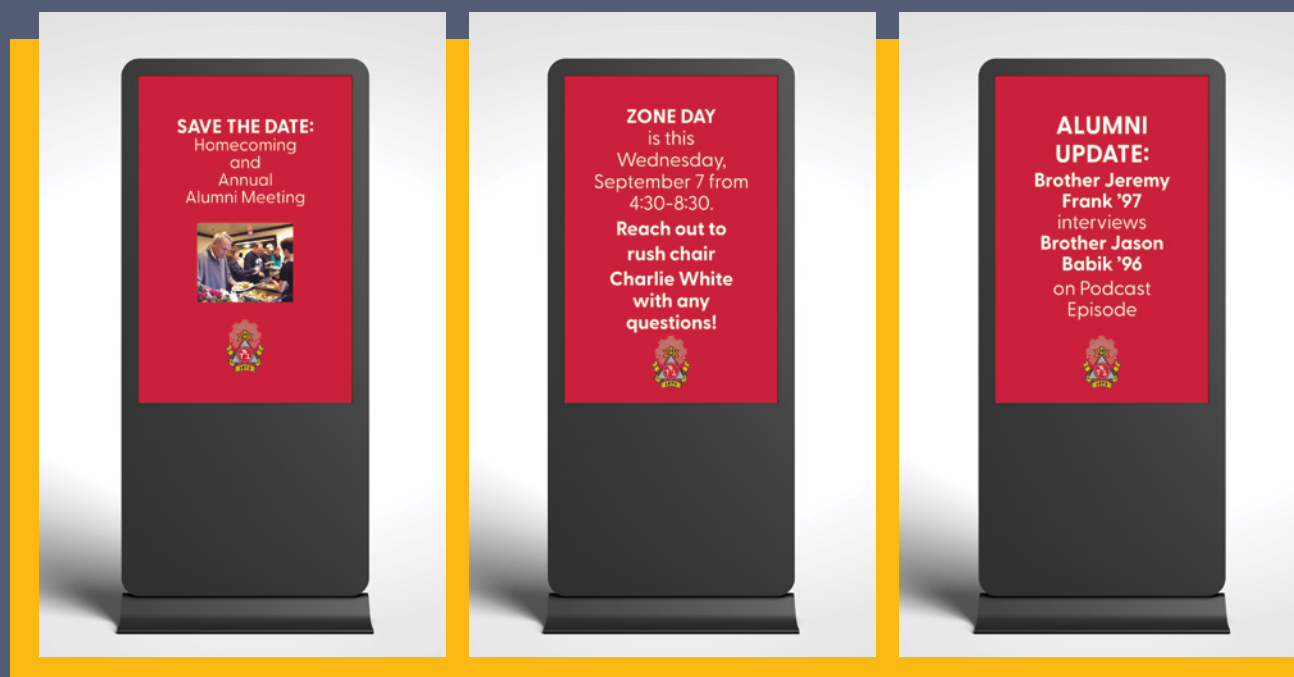


STRENGTHENING OUR CONNECTION THROUGH TECHNOLOGICAL INFRASTRUCTURE

Beyond an impressive physical structure, today's Greek students expect a living environment equipped with technology that enables them to stay up-to-date with the latest news and announcements. Even more importantly, improving our IT systems will allow us to provide higher-quality programming and more robust participation systems for alumni who visit the house both virtually and in person events like Homecoming and Founder's Day.

Our planned technological improvements include:

- **RESTORE LIVING ROOM CREST:** you may be aware that the historic Crest in our living room has been replaced by a flat-screen television. We will honor the history of the house by restoring the Crest to its rightful place above the fireplace, where it's hung proudly since 1927. We have installed a projector on the ceiling and a screen that can be displayed or retracted above the Crest when not in use, allowing us to accomplish this without sacrificing function.
- **BUILD ROBUST VIRTUAL PARTICIPATION SYSTEM FOR ALUMNI EVENTS:** we will enlist professionals to assist us with the technological aspects of alumni gatherings including Homecoming, Founder's Day, and Work Weekend events. In addition to helping our live events run smoothly, this will increase participation and create a better experience for those alumni who are unable to attend and instead choose to stream meetings and events from home.
- **CREATE LIVE KAPPA CHAPTER-INTEREST FEED:** we will curate relevant stories from Kappa Chapter Alumni, Active Brothers' activities, Penn State, and Phi Sig National into a live news feed that will keep us all connected with the broader Kappa Chapter community. We plan to install digital signage throughout the chapter house that will run the feed on a continuous loop, keeping all visitors informed of the latest Kappa Chapter news. The feed will also be remotely accessible to all Brothers on their smartphones and other devices.
- **DIGITIZATION OF CHAPTER RECORDS:** we will gather all relevant Kappa Chapter records— predominantly composites— and scan them so that we can create a more permanent digital record accessible to all Brothers online. Hard copies are often lost or destroyed through the years; we want to preserve our Brotherhood's history for generations to come.

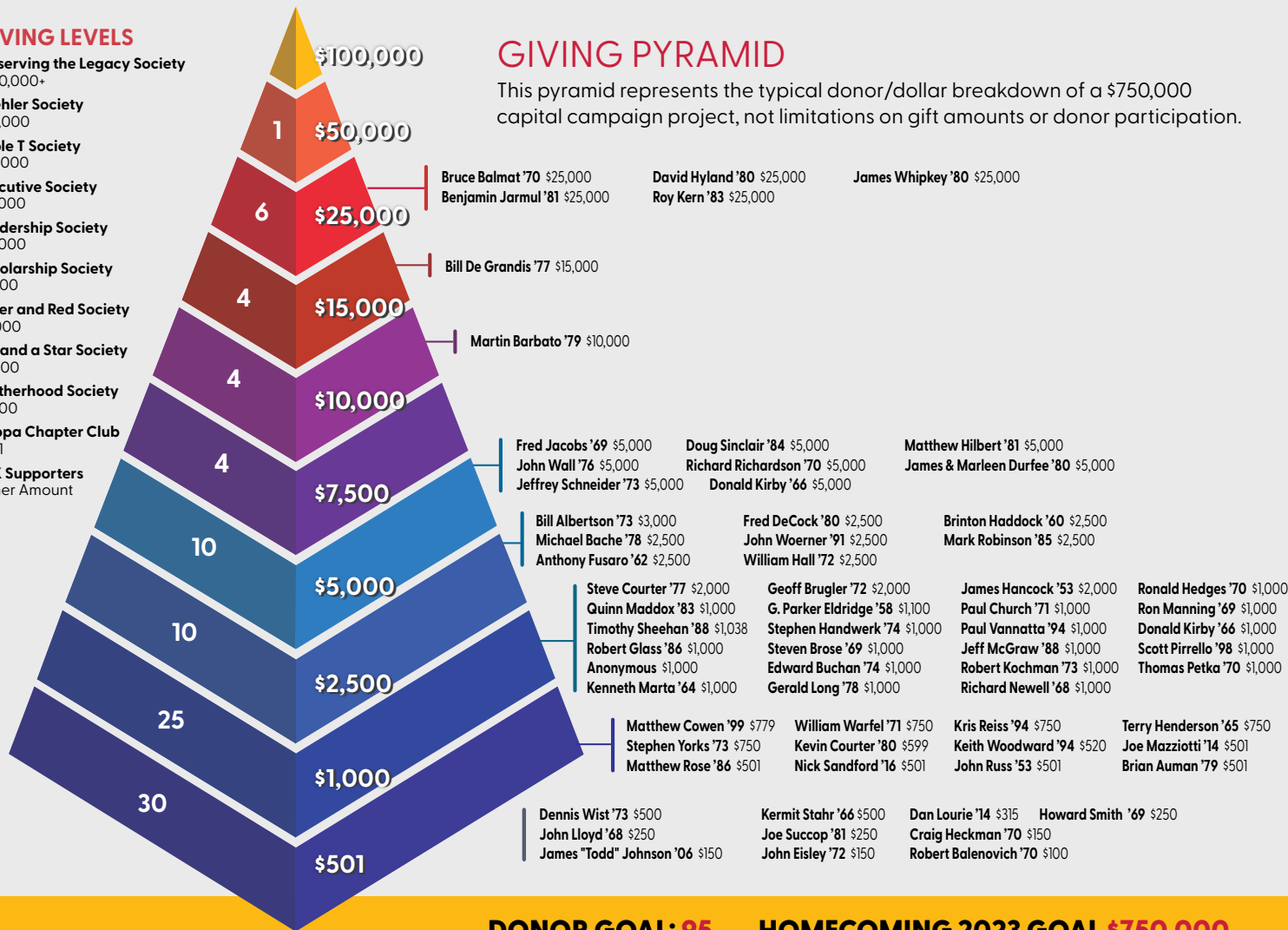


GIVING LEVELS

- Preserving the Legacy Society**
\$100,000+
- Koehler Society**
\$50,000
- Triple T Society**
\$25,000
- Executive Society**
\$15,000
- Leadership Society**
\$10,000
- Scholarship Society**
\$7,500
- Silver and Red Society**
\$5,000
- Hill and a Star Society**
\$2,500
- Brotherhood Society**
\$1,000
- Kappa Chapter Club**
\$501
- PSK Supporters**
Other Amount

GIVING PYRAMID

This pyramid represents the typical donor/dollar breakdown of a \$750,000 capital campaign project, not limitations on gift amounts or donor participation.



DONOR GOAL: 95 HOMECOMING 2023 GOAL \$750,000

REACHING OUR GOAL

Capital Improvements for the House

Upgrade kitchen.....	\$350,000
Capital Maintenance Program	\$145,000
Update flooring.....	\$75,000
Refresh the basement (including Triple Ts).....	\$60,000
Create outdoor social space	\$50,000

Strengthening Our Connection Through Technological Infrastructure

Restore living room Crest & install projector system	\$20,000
Build robust virtual participation system for alumni events.....	\$20,000
Create a live Kappa Chapter-interest feed.....	\$15,000
Digitization of chapter records	\$15,000

This breakdown represents anticipated uses for campaign funds and estimated costs for projects only and is not fully comprehensive.

GIVING LEVELS

- Preserving the Legacy Society** - \$100,000+
- Koehler Society** - \$50,000
- Triple T Society** - \$25,000
- Executive Society** - \$15,000
- Leadership Society** - \$10,000
- Scholarship Society** - \$7,500
- Silver and Red Society** - \$5,000
- Hill and a Star Society** - \$2,500
- Brotherhood Society** - \$1,000
- Kappa Chapter Club** - \$501
- PSK Supporters** - Other Amount

BECOME A PART OF KAPPA CHAPTER HISTORY

At the close of the campaign, we will install a permanent plaque in the Kappa Chapter house to commemorate the occasion. The plaque will include the names and graduation years of all the Brothers who contributed any amount to The "Damn Proud" Capital Campaign, listed by giving level. Join us in this historic effort.

WAYS TO GIVE ~ GOAL: HOMECOMING 2023

To provide maximum flexibility and to secure generous gifts for The “Damn Proud” Capital Campaign, each alumnus is encouraged to consider making a major commitment to the project.

While cash gifts are important to start work on the planned improvements, deferred gifts such as bequests, trusts, and insurance policies also are welcome because they will help to provide for the future and ensure the existence of Phi Sigma Kappa for generations to come.

The following gift opportunities are available to campaign contributors:

METHODS FOR GIVING ONE-TIME GIFTS & MULTI-YEAR PLEDGES

Outright gifts of cash are especially welcome because they can be utilized to help us meet our immediate needs. Many alumni choose to make a one-time gift or to fulfill their major pledge by paying over several smaller installments. Pledges are payable over multiple years; we encourage pledges to be paid in full within three (3) years.

1 Submit a Pledge

Visit phisigpsu.com/campaign to fill out your online pledge form. Pledges are payable over up to five years, and interest-free pledge payments may be made monthly, quarterly, semi-annually, or annually according to your preference. You may submit a pledge at any time to let us know your intent, even without making an initial payment.

2 Make a Credit/Debit Card Payment

Visit phisigpsu.com/campaign and click the “give online” button to make a one-time donation, or to set up automatic recurring card payments. If you set up automatic payments, make sure to also submit a pledge form with the planned total amount of your gift so that we can acknowledge you properly.

3 Send a Check

Checks should be made payable to “**The Phi Sigma Kappa Association of State College**” with “**Capital Campaign Gift**” OR “**Capital Campaign Pledge Payment**” in the memo line. Mail all checks to our donation processing center at this address:

Phi Sigma Kappa - Penn State
Alumni Relations Processing Center
P.O. Box 7007
Albert Lea, MN 56007-8007

4 Call the Donation Hotline

To give on the phone, get your card information ready and call **1-800-975-6699**. Press **1** on the call menu to make a donation and let the operator know you’re contributing to the “**Phi Sigma Kappa at Penn State Capital Campaign**” and the amount of your gift.

METHODS FOR LEGACY GIVING

After securing the financial needs of your loved ones, a legacy gift enables you to support the Kappa Chapter of Phi Sigma Kappa in the future. By including us in your will, naming us as a beneficiary of all or part of a life insurance policy, or taking advantage of other planned giving opportunities, you can preserve your assets now and support Phi Sig PSU for years to come. If you would like to discuss what kind of gift might be right for you, email us at info@phisigpsu.com and request a confidential, no-obligation conversation to get started.

1 MEMORIAL GIFTS

Many donors wish to give a contribution in honor of another Brother, family member, or friend. If any of these options are of interest to you, please include a note along with your donation to notify us of your intent to make a memorial gift and to provide us with the details of your honoree.

2 BEQUESTS

We encourage alumni to consider us as a part of their estate planning by including a bequest in their will for the Kappa Chapter of Phi Sigma Kappa at Penn State. A bequest may take the form of cash, securities, real estate, or other assets. The alumnus may leave a bequest in the form of a specific sum; specific property; or, a percentage of the remainder of their estate after provisions for survivors have been fulfilled.

If you plan to make a bequest, send us an email with your name, grad year, and the amount you plan to designate for Kappa Chapter of Phi Sigma Kappa at info@phisigpsu.com.

3 GIFTS OF LIFE INSURANCE

Many times the life insurance coverage that one has accumulated over the years is no longer needed for its original purpose. In such cases, a donor can name Phi Sigma Kappa at Penn State as the primary or secondary beneficiary of a life insurance policy. Alternatively, if you do not wish to continue payments on a whole life policy that has accumulated cash value, consider making a present gift of the cash value to Kappa Chapter.

If you plan to name us as a beneficiary of your life insurance policy, send us an email with your name, grad year, and the amount you plan to designate for Kappa Chapter of Phi Sigma Kappa at info@phisigpsu.com.

4 RETIREMENT ACCOUNTS

You can name Kappa Chapter of Phi Sigma Kappa as the beneficiary of a qualified retirement plan asset such as a 401(k), 403(b), IRA, Keogh, or profit-sharing pension plan.

If you plan to name us as a beneficiary of your retirement plan, send us an email with your name, grad year, and the amount you plan to designate for Kappa Chapter of Phi Sigma Kappa at info@phisigpsu.com.

Gifts to Kappa Chapter of Phi Sigma Kappa are not tax-deductible. The information contained herein should not be relied upon for personal, legal, or financial decisions and you should consult your own advisor for specific advice tailored to your situation.



OUR HISTORY

The national Phi Sigma Kappa fraternity was founded in 1873 at the University of Massachusetts based on the three cardinal principles: the Promotion of Brotherhood, the Stimulation of Scholarship, and the Development of Character. The Kappa Chapter of Phi Sigma Kappa Fraternity was founded at The Pennsylvania State College in June 1899.

In 1923, with the combined efforts of alumni and undergraduates, a vigorous financial campaign for building a Kappa Chapter house was completed. Everyone, from the oldest alumnus to the lowest lowly pledge, joined in the effort. A corner lot at South Allen Street and Fairmont Avenue was selected as the site for the new home and excavation began in Fall 1926. The three-story stone house was officially completed in 1927 and has served as a home for generations of Penn State Phi Sigs for almost 100 years.



THE CARDINAL PRINCIPLES

To Promote Brotherhood. Justice, harmony, and brotherly love are essential to the spirit of fraternity. We promise to set an example of true brotherhood not only in our relations with each other, but in our association with people everywhere.

To Stimulate Scholarship. Wisdom comes with learning. Complementing the mission of higher education, we seek to help our members to combine formal and informal learning experiences; to more fully appreciate the importance of both theoretical and practical knowledge; and, by broadening their understanding of human relationships, to produce men of wisdom who will be better prepared to make positive contributions to society and all mankind.

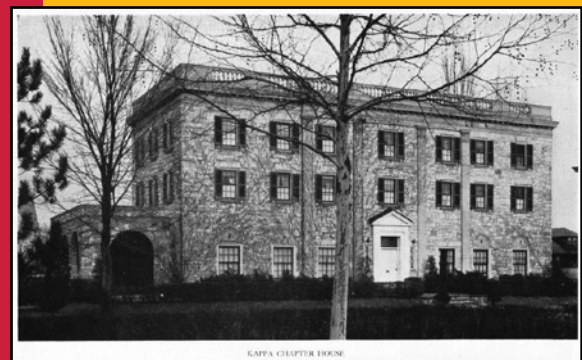
To Develop Character. Honor is the basis of fraternal relationships. We resolve to instill in each member a devotion to those values which will guide him to ends that are noble and right, so that in all that he represents and in all that he does, he shall be known as a man of honor who inspires others by his example and thus wins admiration and respect for himself and for Phi Sigma Kappa.

CONTACT US

Website	www.phisigpsu.com
Email	info@phisigpsu.com
Mailing Address	Phi Sigma Kappa - Penn State Alumni Relations Processing Center P.O. Box 7007 Albert Lea, MN 56007-8007

FAQs

Visit www.phisigpsu.com/campaign/faqs for answers to our frequently asked questions.





FAQs

Visit www.phisigpsu.com/campaign/faqs
for answers to our frequently asked questions.

WWW.PHISIGPSU.COM | INFO@PHISIGPSU.COM

PHI SIGMA KAPPA - PENN STATE, ALUMNI RELATIONS PROCESSING CENTER, P.O. BOX 7007, ALBERT LEA, MN 56007-8007